

VX series with ASU system: for discharging dense food liquids

Case Study - SL di Liverani Srl



Problem

Lot of wear on mechanical seal

Solution

Changing to a rotary lobe pump
VX136-140Q with ASU system

The customer and the problem

Sassuolo Spurghi is a family business founded in the eighties carrying out firstly the ecology service for industries, public companies and civil purposes in the province of Modena and Reggio Emilia.

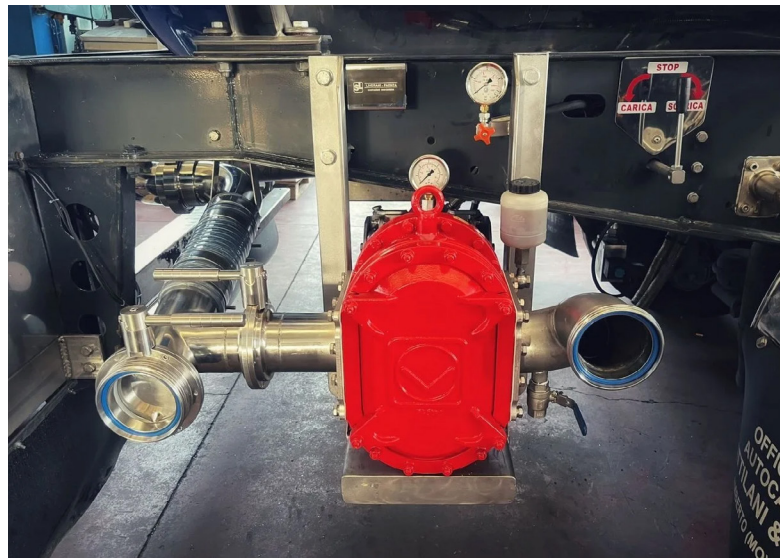
Over the years it has specialized in drainage for private and commercial business, becoming the main point of reference for the ceramic industries of the area, dealing with the suction and transport of aqueous and powdery solid sludge produced by the industries. The main problem encountered following the transfer of this sludge was the wear of the mechanical seals. This wear is caused by the presence of ceramic residues such as glazes and slip in the sludge containing microgranules which, especially during the strong stresses due to the vibration of the pumps installed previously, interpose themselves between the slots of the pump causing the deterioration of the components in contact with the fluid.



The SL company of Liverani uses the rotary lobe pump

The solution

In cooperation with our customer SL di Liverani we have decided to instal a VX136-140Q to replace the Jurop VL 20 with hydraulic motor. To improve the lifetime of the mechanical seals we have decided to use our mechanical seal Quality Cartridge WC/Sic together with the new system ASU (automatic supply unit). The task of the seal supply system ASU is to keep the lubricant in a seal at a constant level and to maintain the pressure of the buffer chamber pressure within the seal.



Rotary lobe pump - VX136-140Q with ASU system

Advantages of the VX series

- Comprehensive range of features and options
- Self-priming and dry-running resistant
- Shaft warranty
- Quick access to the pump chamber by removing the cover
- Simple service and maintenance

Benefits for the user

- After 10 months of work the trucker is very happy how the pump operates
- So far there was no need to overhaul or replace the mechanical seals
- The performance of the pump has improved and he is saving time and costs on his charge / discharge cycles
- Quiet operation cycles
- Oil consumption of the hydraulic motor has decreased

Mentioned Vogelsang products

[VX series: Rotary lobe pump for every application](#)



Mentioned Vogelsang products

[VX series: Rotary lobe pump for industrial applications](#)



Vogelsang GmbH & Co. KG
Holthöge 10 – 14 | 49632 Essen (Oldenburg) | Germany
Phone: +49 5434 83 - 0 | Fax: +49 5434 83 -10
germany@vogelsang.info

vogelsang.info

