

# VX series: Vacuum and transport of ceramic sludge

## Case Study - Sassuolo Spurghi SRL



### Problem

High wear of the pumps which move the sludge from ceramic production

### Solution

Rotary lobe pump VX136-210Q

### The customer and the problem

Sassuolo Spurghi is a family business founded in the eighties carrying out firstly the ecology service for industries, public companies and civil purposes in the province of Modena and Reggio Emilia.

Over the years it has specialized in drainage for private and commercial business, becoming the main point of reference for the ceramic industries of the area, dealing with the suction and transport of aqueous and powdery solid sludge produced by the industries. The main problem encountered following the transfer of this sludge was the wear of the mechanical seals. This wear is caused by the presence of ceramic residues such as glazes and slip in the sludge containing microgranules which, especially during the strong stresses due to the vibration of the pumps installed previously, interpose themselves between the slots of the pump causing the deterioration of the components in contact with the fluid.

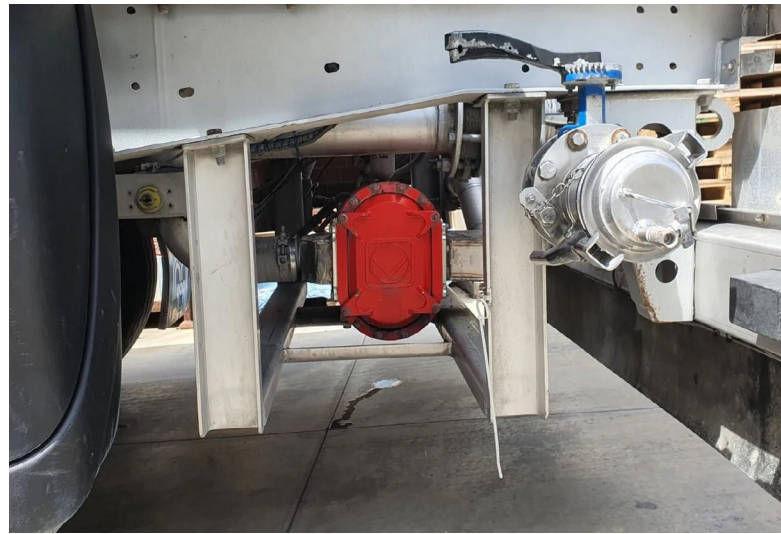


Truck with a tanker at Sassuolo Spurghi

### The solution

The customer decided to equip the tanker dedicated to the management of ceramic sludge with the Vogelsang rotary lobe pump VX136-210Q driven by a double hydraulic motor. Vogelsang pumps smoothly transfer even viscous liquids and liquids with suspended solids content. In this way the loading and unloading operations of the tanks take place quickly and with a single pump, since the flow direction is reversible. The absence of vibrations makes the pumping process less turbulent and more fluid with a positive impact on the life of the components subject to wear.

Our pumps are perfect for mobile applications because they are compact. They are easy to maintain, thanks to the QuickService concept that does not require disassembly from the vehicle for quick replacement of worn parts.



**Vogelsang rotary lobe pump VX136-210Q  
driven by a double hydraulic motor**

### Advantages of the VX series

- Noiseless and pulsation free pump
- Less wear of components in contact with the fluid
- More efficient hydraulic circuit supply system with reduced oil consumption
- High performance even with high torque
- Flow reversibility

### Mentioned Vogelsang products

[VX series: Rotary lobe pump  
for every application](#)



### Mentioned Vogelsang products

[VX series: Rotary lobe pump  
for industrial applications](#)



### Vogelsang Ireland Ltd.

Unit 3, Liosban Business Park | Tuam Road  
Galway H91 H63P | Ireland  
Phone: +353 91 394 570 | ireland@vogelsang.info

[vogelsang.info/ie](http://vogelsang.info/ie)

