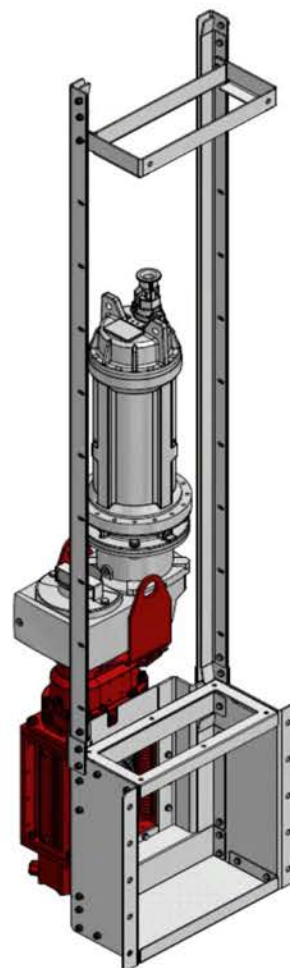
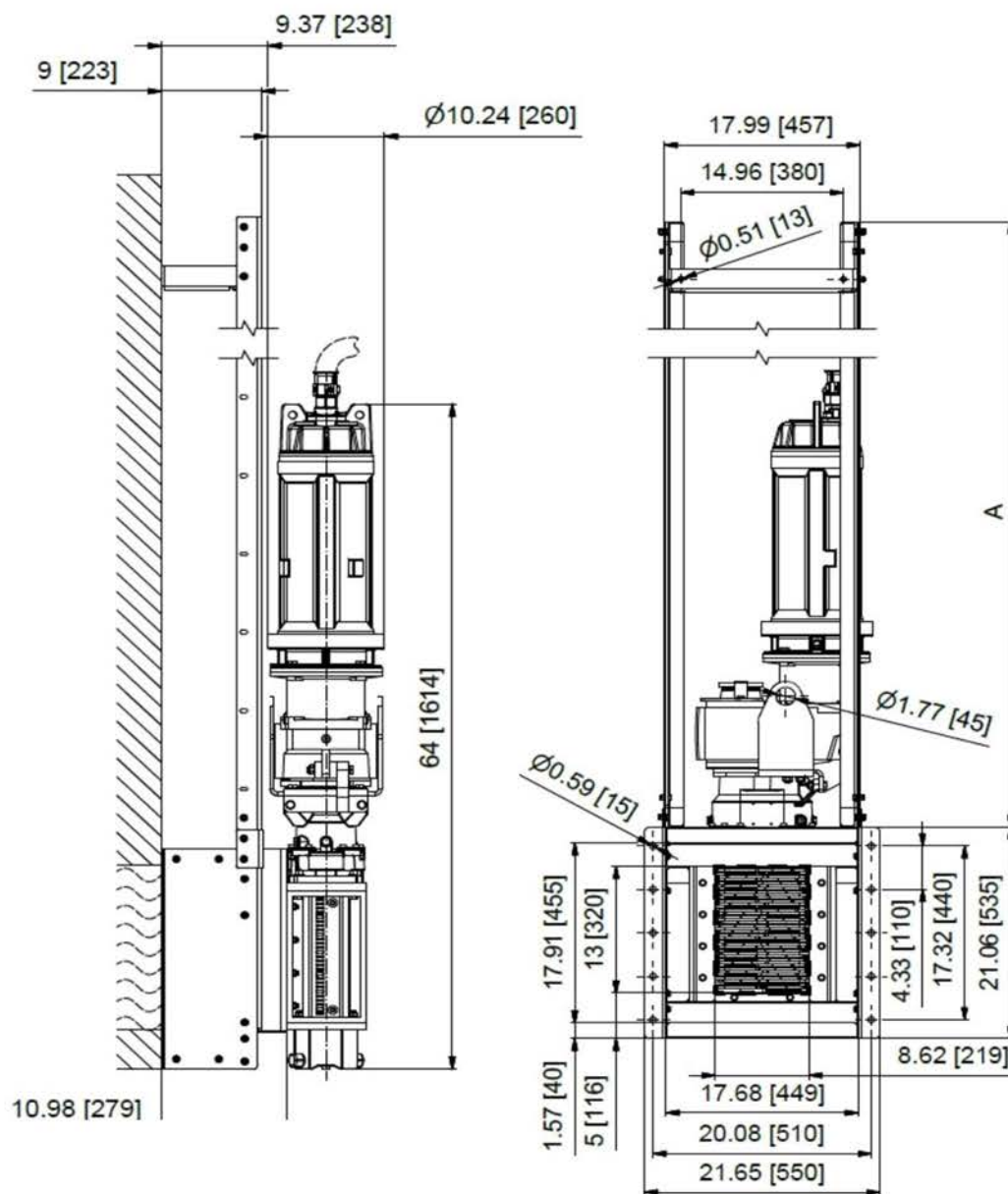




XRipper XRC100-320QD

Twin Shaft Grinder



Unit Weight: 723 lbs. (327.9kg)

Sized to Replace:

JWCE®	30002-0008
JWCE®	30002-0012
JWCE®	30005-0008
JWCE®	30005-0012
Franklin Miller®	TM8508
Franklin Miller®	TM8512
Sewer Chewer®	CC-8
Sewer Chewer®	CC-12

Dimensions: inches [mm]

Dimension A: Dependent upon depth of channel or lift station

Typical Drawing: Unit configured with immersible motor

sales@vogelsangusa.com		
PO Box 751, Ravenna, OH 44266-0751		
Phone: +1 (330) 510-1556		
Date	7/8/2016	© copyright



VOGELSANG

ENGINEERED TO WORK