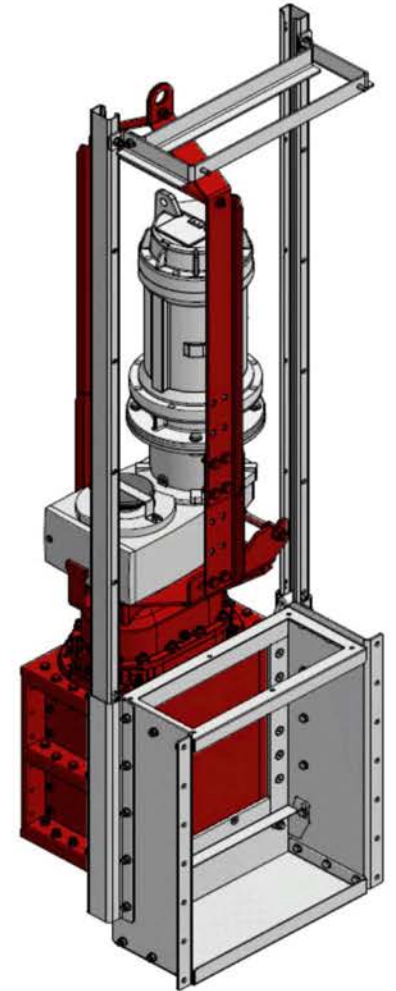
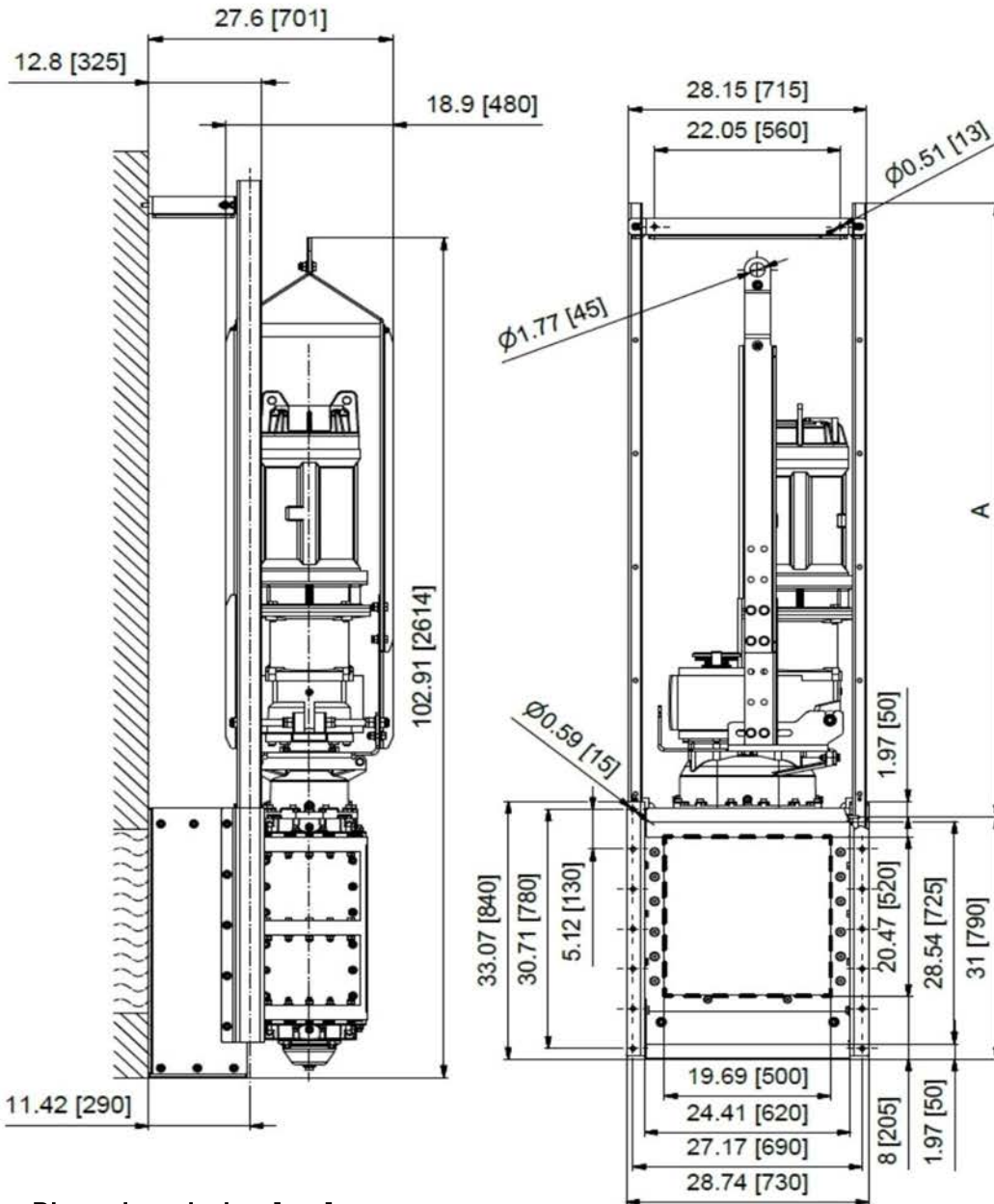




## XRipper XRC186-520QD

## Twin Shaft Grinder



**Unit Weight: 2204 lbs. (999.7kg)**

Sized to Replace:

JWCE®	30002-0032
JWCE®	30005-0032
JWCE®	40002-0024
JWCE®	CMD1810-XD2.0
Franklin Miller®	TM8532
Franklin Miller®	TM8524D
Franklin Miller®	TM14024
Sewer Chewer®	CC-32

**Dimensions: inches [mm]**

**Dimension A: Dependent upon depth of channel or lift station**

**Typical Drawing: Unit configured with immersible motor**

sales@vogelsangusa.com		
PO Box 751, Ravenna, OH 44266-0751		
Phone: +1 (330) 510-1556		
Date	7/8/2016	© copyright



**VOGELSANG**  
ENGINEERED TO WORK