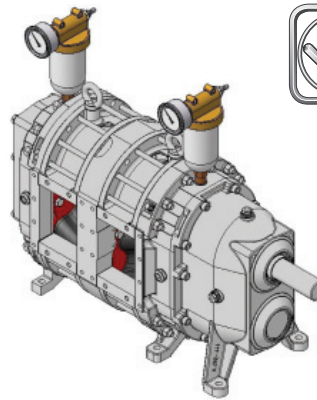


# VX136-140QDM2

The Marathon Series is our high pressure line of pumps. You'll find Marathon pumps in many applications in agriculture, industry and municipalities. The Marathon is a two-stage pump which splits the pressure between chambers. This allows the pump to handle much higher pressures than any traditional rotary lobe pump.



**VOGELSANG**

## HIFLO POSITIVE DISPLACEMENT ROTARY LOBE PUMPS

**Run Dry Without Damage:** Vogelsang pumps are warranted against damage from run dry for a period up to 30 minutes.

**Complete Wet-End Rebuilds Inline:** Change rotors, mechanical seals, lip seals, wear plates, and adjust housing segments with ease.

**100% Pulsation Free Operation:** Vogelsang HiFlo Rotors provide pulsation free operation through the entire range of pumping.

**Maximum Mechanical Seal Life:** Vogelsang pumps use a pressurized oil canister to maintain pressure inside a buffer chamber between the wetend and gear box. This pressure reduces the wear on the mechanical seals and help keep your pump at optimum performance.

**Self Priming to 25' (Wet):** With suction lifts to 25', Vogelsang pumps excel at the toughest suction lift applications.

**Compact Size Reduces Expense:** Small footprints equate to reduced construction and fabrication expense.

**Unlimited Drive Options:** V-Belt drives, Geared Motors with reducers, Close coupled hydraulic motors, air or submersible, Power Take Off. Vogelsang pumps offer unlimited drive options.

**Low Noise Operation:** Just 78db at 3 feet.

**Excellent for Shear Sensitive Material:** Our gentle pumping action coupled with 100% pulsation free operation makes Vogelsang the pump of choice for all your shear sensitive material pumping needs.

**High Pressure:** The two stage design allows the pump to operate under higher pressure than a single stage pump. Marathon pumps can handle up to 232psi.

## MECHANICAL SPECIFICATIONS: STANDARD & OPTIONAL

### Materials:

**Bearing Housing:** Gray Cast Iron (230-260 Brinell)

**Front Cover:** Gray Cast Iron (230-260 Brinell)

**Front & Rear Wear Plate Options:** Hardox (700 Brinell),  
**Optional:** Tungsten Carbide, Stainless Steel.

**Pump Shaft:** Carbon Steel (ASTM A470)

**Shaft Sleeve:** Stellite Coated Stainless Steel.

**Housing Segment Options:** Gray Cast Iron (750 Brinell),  
**Optional:** Tungsten Carbide, Stainless Steel.

**Mechanical Seal Options:** Component Seal, Duronite or Silicon Carbide. Block Ring Cartridge Seal, Duronite (standard in new pumps) or Silicon Carbide.

**Rotor Core:** Gray Cast Iron

**Rotor Coating Options:** SBR, NBR (standard in new pumps), SewageLine®, Viton, Werobust®, Steel, Stainless Steel.

### Mechanical Specifications:

**Connections:** Suction, 4" Discharge, 4"

**Weight:** 684lbs.

**Rotor Options:** HiFlo 4-wing Lobes

**Mounting & Drive Options:** Inline Gear Motor & PTO.

**Housing Segment Options:** Standard or Dynamic

### Warranty, Testing & Quality Assurance:

**Warranty:** Municipal, 2 years, 100% parts and labor, including wear. Industrial & Agricultural, 1 year, manufacturer's defects.

**Testing:** Each pump is factory tested at the customers specified duty point at a suitable range of flow and pressure conditions in accordance with Hydraulic Institute Standards.

**ISO 9001:2008 Certification:** Vogelsang is a fully certified for the manufacture and repair of industrial pumping equipment.

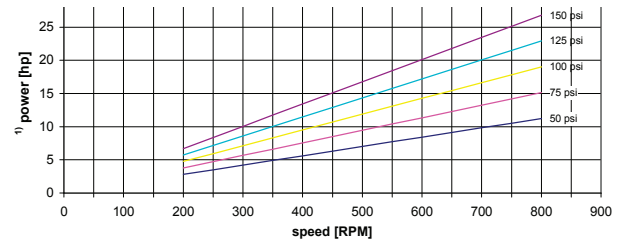
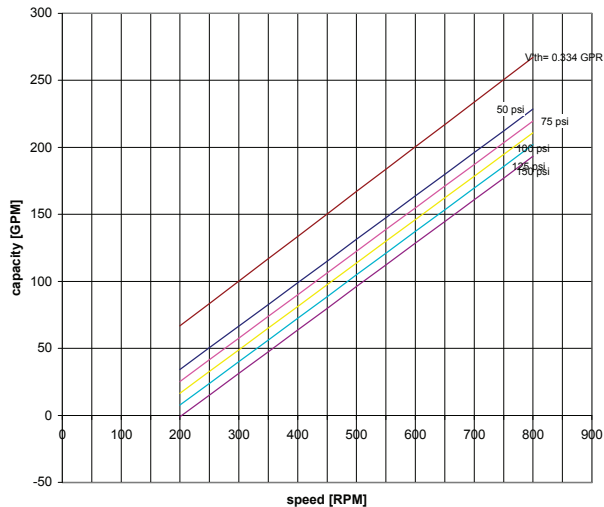
# VX136-140QDM2



## PERFORMANCE SPECIFICATIONS

Series & Model	Capacity		Displacement		Max Solids		Flange Size		Max Pressure		Max. Speed rpm 1/min
	gpm	m <sup>3</sup> /h	gal/100rev	l/100rev	in	mm	in	mm	QD: psi	bar	
VX136-140	45-200	10-45	33.5	127	1.5	40	4	100	232	16	650

## PERFORMANCE CURVES



Values based upon water 70°F  
<sup>1)</sup> required driving power at the pump shaft

## DIMENSIONAL DRAWING

All dimensions in inches  
 except shaft diameter

