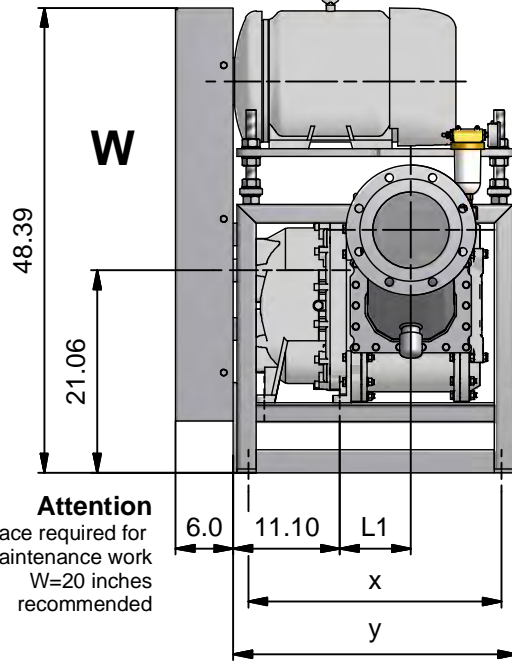
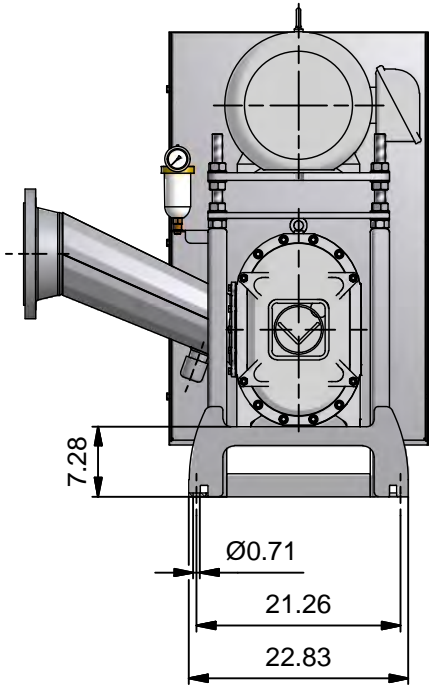


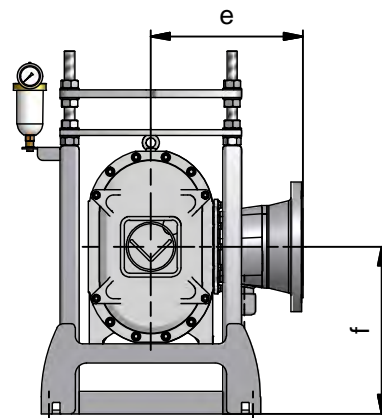
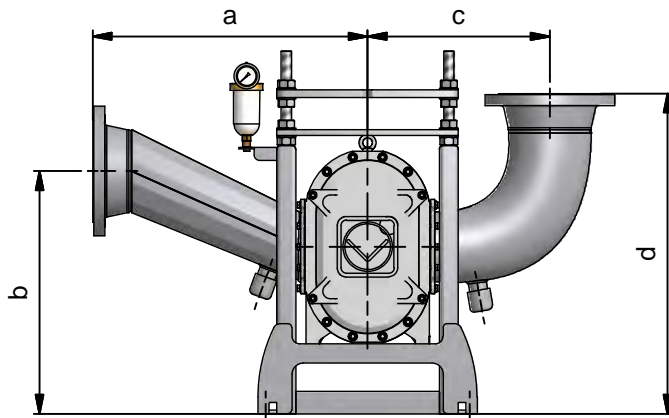
## Dimensions

series: VX186Q base, type belt drive frame work



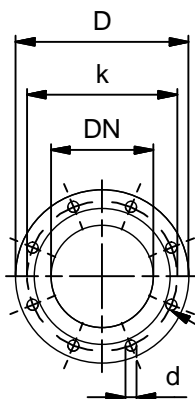
**W**

**Attention**  
space required for  
maintenance work  
W=30 inches min.,  
40 inches recommended



size	pump dimensions	standard flange ASME B16.5 150 lbs					gooseneck		90° bend		straight (not recommended)		weight (lb)
VX186-	L1	DN	d	D	k	n	a	b	c (1)	d	e	f	2)
92Q	4.09"	6"	0.88"	11"	9.5"	8	24.29"	24.09"	15.43"	29.41"	14.84"	17.40"	735
130Q	4.84"						24.29"	24.09"	15.43"	29.41"	14.84"	17.40"	770
184Q	5.91"						24.29"	24.09"	15.43"	29.41"	14.84"	17.40"	816
260Q	7.40"	8"	1"	13.5"	11.75"	12	28.62"	25.28"	18.98"	33.35"	15.83"	19.39"	880
368Q	9.53"	10"		16"	14.25"		25.31"	25.28"	28.78"	38.43"	17.80"	19.09"	on request
390Q	9.96"	10"		16"	14.25"		25.31"	25.28"	28.78"	38.11"	17.80"	19.09"	on request

- 1) for an oversized motor a special connector is required, so that dimension "c" will change.
- 2) only pump with base



allowable horizontal forces: 1000 N  
allowable vertical forces: 1000 N  
allowable moments: 300 Nm

number of  
holes n

changes of dimensions reserved  
dimensions without indication of  
tolerances acc. to DIN ISO 2768, rough

part number connectors							base, type belt drive frame work		
size	gooseneck		90° bend (1)		straight		part number	x	y
VX186-	part number	weight (lb)	part number	weight (lb)	part number	weight (lb)			
92Q	GPA.150	42.8	GPA.160	38.8	GPA.170	33.3	GBO.187.TV	26.38"	29.53"
130Q	GPA.151	44.9	GPA.161	44.9	GPA.171	34.6			
184Q	GPA.156	46.0	GPA.162	45.8	GPA.176	36.7			
260Q	GPA.157	82.7	GPA.163	76.1	GPA.177	57.9	GBO.187.T1.TV	32.28"	35.43"
368Q	GPA.149	103.4	GPA.132	137.3	GPA.178	83.0			
390Q	GPA.146	103.4	GPA.165	135.0	GPA.175	82.1			

**Vogelsang USA**  
7966 State Route 44  
P. O. Box 751  
Ravenna, OH 44266 USA



**VOGELSANG**  
ENGINEERED TO WORK

drawing no.: MAS0086 R: O  
drawn by: Ellmann date: 20.04.2010  
checked by: Hesler date: 21.04.2010

dimensions shown in inches  
fabrication tolerance is  $\pm .12"$