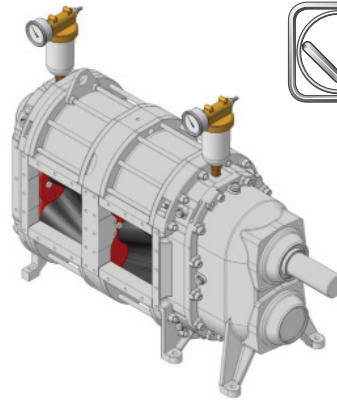


VX186-520QDM2

The Marathon Series is our high pressure line of pumps. You'll find Marathon pumps in many applications in agriculture, industry and municipalities. The Marathon is a two-stage pump which splits the pressure between chambers. This allows the pump to handle much higher pressures than any traditional rotary lobe pump.



V/OGELSANG

HIFLO POSITIVE DISPLACEMENT ROTARY LOBE PUMPS

Run Dry Without Damage: Vogelsang pumps are warranted against damage from run dry for a period up to 30 minutes.

Complete Wet-End Rebuilds Inline: Change rotors, mechanical seals, lip seals, wear plates, and adjust housing segments with ease.

100% Pulsation Free Operation: Vogelsang HiFlo Rotors provide pulsation free operation through the entire range of pumping.

Maximum Mechanical Seal Life: Vogelsang pumps use a pressurized oil canister to maintain pressure inside a buffer chamber between the wetend and gear box. This pressure reduces the wear on the mechanical seals and help keep your pump at optimum performance.

Self Priming to 25' (Wet): With suction lifts to 25', Vogelsang pumps excel at the toughest suction lift applications.

Compact Size Reduces Expense: Small footprints equate to reduced construction and fabrication expense.

Unlimited Drive Options: V-Belt drives, Geared Motors with reducers, Close coupled hydraulic motors, air or submersible, Power Take Off. Vogelsang pumps offer unlimited drive options.

Low Noise Operation: Just 78db at 3 feet.

Excellent for Shear Sensitive Material: Our gentle pumping action coupled with 100% pulsation free operation makes Vogelsang the pump of choice for all your shear sensitive material pumping needs.

High Pressure: The two stage design allows the pump to operate under higher pressure than a single stage pump. Marathon pumps can handle up to 232psi.

MECHANICAL SPECIFICATIONS: STANDARD & OPTIONAL

Materials:

Bearing Housing: Gray Cast Iron (230-260 Brinell)

Front Cover: Gray Cast Iron (230-260 Brinell)

Front & Rear Wear Plate Options: Hardox (700 Brinell),
Optional: Tungsten Carbide, Stainless Steel.

Pump Shaft: Carbon Steel (ASTM A470)

Shaft Sleeve: Stellite Coated Stainless Steel.

Housing Segment Options: Gray Cast Iron (750 Brinell),
Optional: Tungsten Carbide, Stainless Steel.

Mechanical Seal Options: Component Seal, Duronite or Silicon Carbide. Block Ring Cartridge Seal, Duronite (standard in new pumps) or Silicon Carbide.

Rotor Core: Gray Cast Iron

Rotor Coating Options: SBR, NBR (standard in new pumps), SewageLine®, Viton, Werobust®, Steel, Stainless Steel.

Mechanical Specifications:

Connections: Suction, 10" Discharge, 10"

Weight: 1091lbs.

Rotor Options: HiFlo 4-wing Lobes

Mounting & Drive Options: Inline Gear Motor & PTO.

Housing Segment Options: Standard or Dynamic

Warranty, Testing & Quality Assurance:

Warranty: Municipal, 2 years, 100% parts and labor, including wear. Industrial & Agricultural, 1 year, manufacturer's defects.

Testing: Each pump is factory tested at the customers specified duty point at a suitable range of flow and pressure conditions in accordance with Hydraulic Institute Standards.

ISO 9001:2008 Certification: Vogelsang is a fully certified for the manufacture and repair of industrial pumping equipment.

VX186-520QDM2

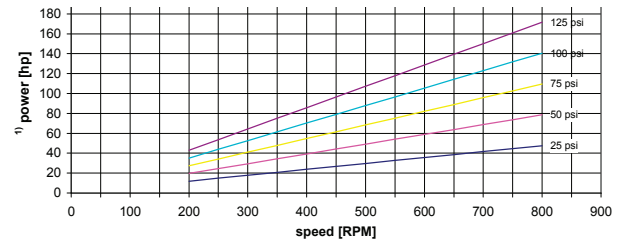
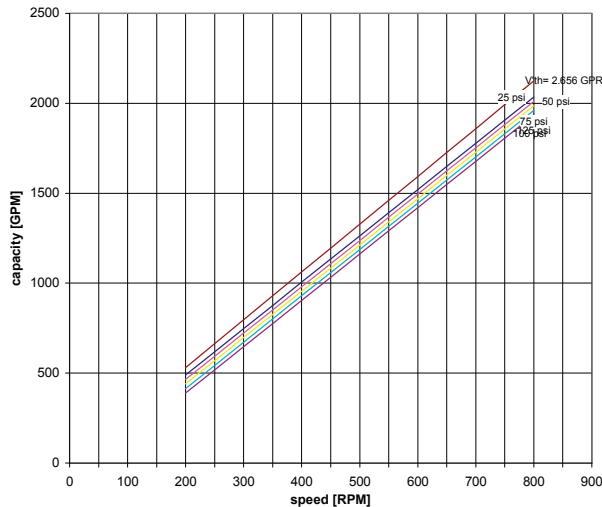


VOGELSANG

PERFORMANCE SPECIFICATIONS

Series & Model	Capacity		Displacement		Max Solids		Flange Size		Max Pressure		Max. Speed rpm 1/min
	gpm	m ³ /h	gal/100rev	l/100rev	in	mm	in	mm	QD: psi	bar	
VX186-520	260-1280	60-290	266.0	1006	2.5	61	10	250	174	12	600

PERFORMANCE CURVES



Values based upon water 70°F
¹⁾ required driving power at the pump shaft

DIMENSIONAL DRAWING

All dimensions in inches
 except shaft diameter

