

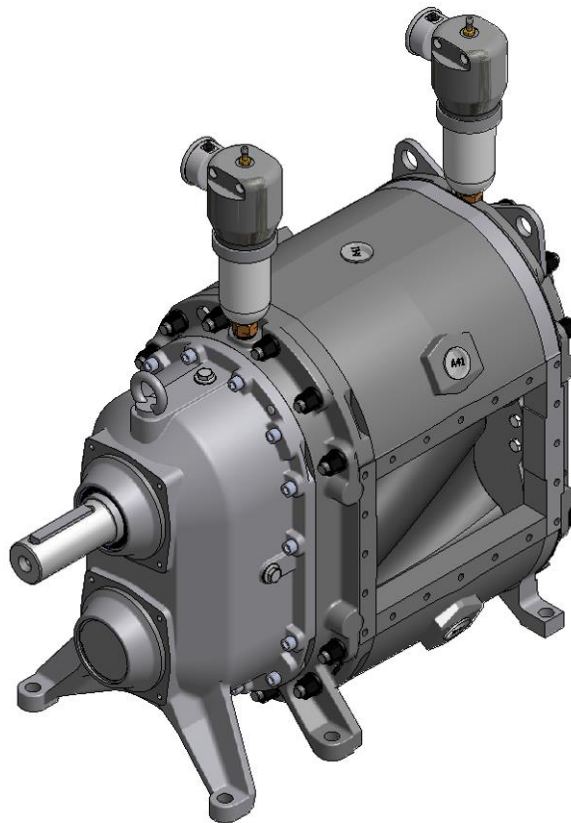


Spare Parts List

Rotary Lobe Pump

VX215QD

ENGINEERED TO WORK



Issuer

Hugo Vogelsang Maschinenbau GmbH
Holthöge 10-14
49632 Essen/Oldb.

Phone: +49 54 34 83 0
Fax: +49 54 34 83 10

vogelsang-gmbh.com
info@vogelsang-gmbh.com

In the absence of express, written authorisation from the issuer, the reproduction or partial reproduction of this document in any form is prohibited.

We reserve the right to make technical modifications to the diagrams and information presented in this document in the event that such modifications become necessary for the enhancement of the machine.

© 2014 Hugo Vogelsang Maschinenbau GmbH

Registered trademarks of Vogelsang

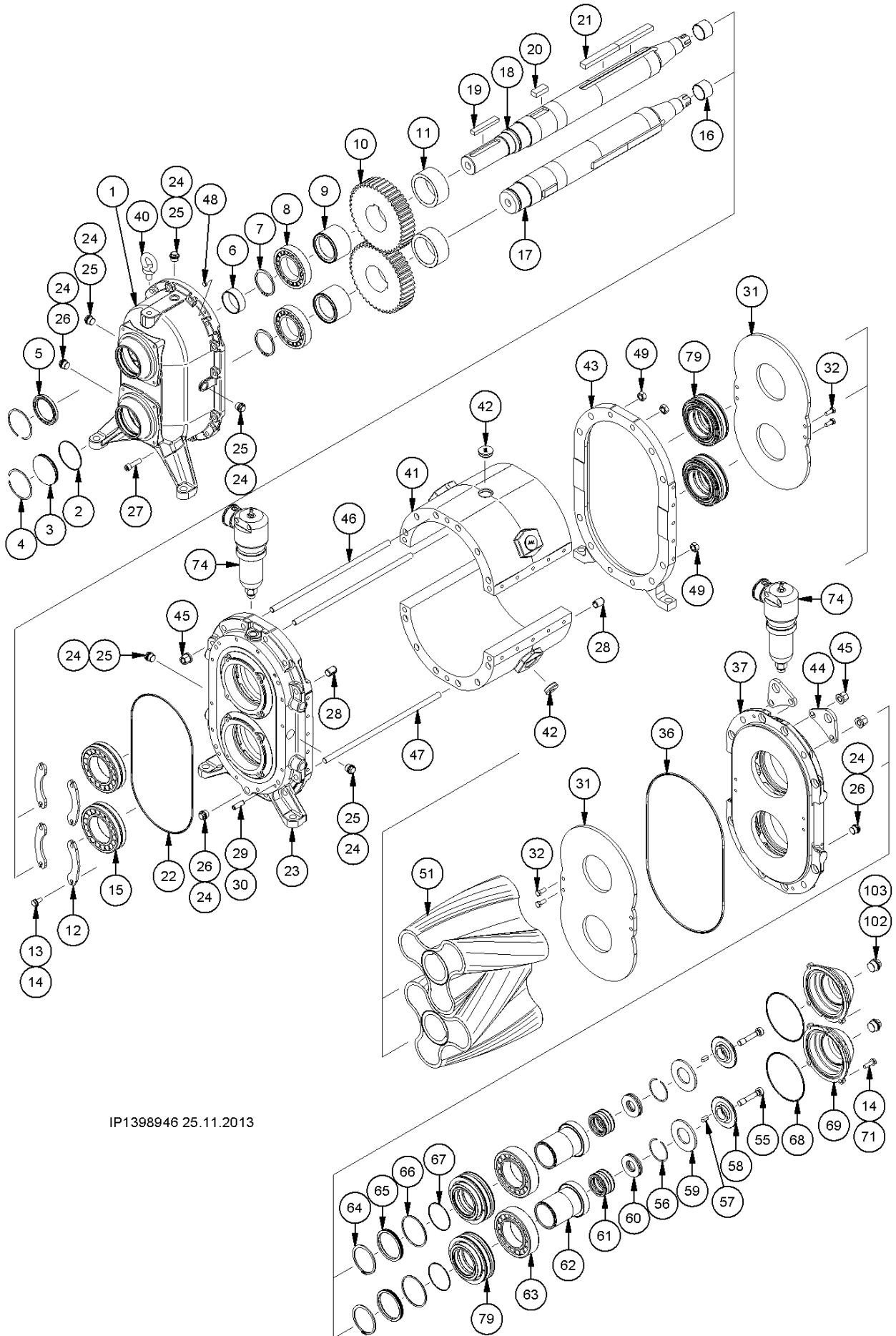
Vogelsang, Vogelsang Logo, RotaCut, HiFlo, ACC, CFC, BioCrack, XTill, EnergyJet and BioCut are registered trademarks of Hugo Vogelsang Maschinenbau GmbH.

The registered trademarks are not always designated with an ® symbol in this document.

Contents

Exploded view	4
Gearbox housing and accessories	5
Position 1-16	5
Motor shaft	5
Position 17-19	5
PTO shaft	5
Position 17-19	5
Fitting key	5
Position 1-15	5
Bearing seal housing + accessories	6
Pos. 22-23.....	6
Screws and accessories	6
Pos. 24-30.....	6
Wear plate	6
Position 31-32	6
Bearing seal housing + accessories	6
Position 36-40	6
Pump housing segment	6
Position 41	6
Accessories	7
Pos. 42-48.....	7
Rotary lobes	7
Position 51	7
Preload	7
Pos. 55-60.....	7
Accessories	7
Pos. 62-70.....	7
Buffer chamber enlargement	7
Position 74	7
Cartridge mechanical seal	8
Pos. 79.....	8
"Loose parts" for Cartridge mechanical seal	8
Screw plug + copper ring	8
Positions 102-103.....	8
Material for connectors	9
Tools	9
Operating material	9
Required spare parts for rotary lobe change	10
Required spare parts for mechanical seal change	10
Required spare parts for wear part replacement	10

Exploded view



IP1398946 25.11.2013

Gearbox housing and accessories

Position 1-16

Pos.	Part number	Description	Dimensions	Notes	Rep.	226	320	452	640
1	PGP0289	Gearbox housing						1	
2	DOR.044	O-ring	85 x 2.5	For motor shaft				1	
				For PTO shaft				-	
3	PRSA028	Plug disc		For motor shaft				1	
				For PTO shaft				-	
4	NSR.027	Multi-disc ring	95 x 5 x 0.98					2	
5	DWD.049.HNB	Radial shaft seal ring	HNBR	For motor shaft				1	
	DWD.049.VI	Radial shaft seal ring	FPM						
	DWD.049.HNB	Radial shaft seal ring	HNBR	For PTO shaft				2	
	DWD.049.VI	Radial shaft seal ring	FPM						
6	NIR.014	Inner ring	JR 65 x 72 x 25	For motor shaft				1	
				For PTO shaft				2	
7	NSR.011	Retaining ring	AS 75 x 4					2	
8	NLG.027	Cylindrical roller bearing						2	
9	PRS.A001.N1	Spacer washer						2	
10	PZH0018	Gear	z = 42; b = 50 mm					2	
11	PRS.A002	Spacer washer						2	
12	PFL.A016	Fixing sheet						4	
13	NUS.066	Lock washer	10,5	DIN 432				8	
14	NSK.027	Hexagon head bolt	M 10 x 25	Fixed bearing				8	
				Bearing cover				8	
15	NLG.025	Spherical roller bearing						2	
16	NIR.021	Inner ring	JR 45 x 50 x 35					2	

Motor shaft

Position 17-19

Pos.	Part number	Description	Dimensions	Notes	Rep.	226	320	452	640
17	PWQ0142	Motor shaft	226QD MK	Short		1	-	-	-
	PWQ0140	Motor shaft	320QD MK	Short		-	1	-	-
	PWQ0156	Motor shaft	452QD MK	Short		-	-	1	-
	PWQ0134	Motor shaft	640QD MK	Short		-	-	-	1
18	PWQ0141	Motor shaft	226QD ML	Long		1	-	-	-
	PWQ0139	Motor shaft	320QD ML	Long					
	PWQ0144	Motor shaft	320QD ML-185	Long		-	1	-	-
	PWQ0143	Hollow shaft	320QD MH						
	PWQ0155	Motor shaft	452QD ML	Long					
	PWQ0157	Motor shaft	452QD ML-185	Long		-	-	1	-
	PWQ0133	Motor shaft	640QD ML	Long		-	-	-	1

PTO shaft

Position 17-19

Pos.	Part number	Description	Dimensions	Notes	Rep.	226	320	452	640
17/18	PWQ0160	PTO shaft	VX215-320QD P6			-	2	-	-
	PWQ0161	PTO shaft	VX215-640QD P6			-	-	-	2

Fitting key

Position 1-15

Pos.	Part number	Description	Dimensions	Notes	Rep.	226	320	452	640
19	NPF.047	Fitting key	B 18 x 11 x 100	Motor shaft long				1	
20	NPF.040	Fitting key	B 22 x 14 x 50					2	
21	NPF.042	Fitting key	B 22 x 14 x 90	DIN 6885		2	-	2	-
	NPF.043	Fitting key	B 22 x 14 x 100	DIN 6885		2	-	2	-
	NPF.044	Fitting key	B 22 x 14 x 140	DIN 6885		-	4	-	8
	NPF.045	Fitting key	B 22 x 14 x 220	DIN 6885		-	-	2	-

Bearing seal housing + accessories

Pos. 22-23

Pos.	Part number	Description	Dimensions	Notes	Rep.	226	320	452	640
22	DOR0162	O-ring	382 mm x 4 mm					1	
23	PGP0293	Bearing seal housing						1	
	PGP0311	Bearing seal housing		Additional connectors					
	PGP0371	Bearing seal housing		Horizontal					

Screws and accessories

Pos. 24-30

Pos.	Part number	Description	Dimensions	Notes	Rep.	226	320	452	640
24	DKR0004	Copper ring	C 22 x 27 x 1,5					6	
25	NSK0031	Screw plug	M 22 x 1,5 mm	DIN 910				3	
26	NSK0049	Screw plug	M 22	Magnetic				3	
27	NSI0045	Cylinder head bolt	M 12 x 45 mm	ISO 4762				14	
28	NSP007	Spring pin	21 mm x 30 mm	ISO 13337		12	12	16	16
29	NSP.017	Spring pin	13 mm x 40 mm	ISO 8752				4	
30	NSP.002	Spring pin	8 mm x 40 mm	ISO 8752				4	

Wear plate

Position 31-32

Pos.	Part number	Description	Dimensions	Notes	Rep.	226	320	452	640
31	PFL0151	Wear plate						2	
32	NSK0027	Hexagon head bolt	M 10 x 25	DIN 933				8	

Bearing seal housing + accessories

Position 36-40

Pos.	Part number	Description	Dimensions	Notes	Rep.	226	320	452	640
36	DOR0163	O-ring	445 mm x 5 mm					1	
37	PGP0346	Bearing seal housing						1	
	PGP0349	Bearing seal housing		Additional connectors					
	PGP0370	Bearing seal housing		Horizontal					
40	NKS0005	Lifting eye bolt	M 16	DIN 580				1	

Pump housing segment

Position 41

Pos.	Part number	Description	Dimensions	Notes	Rep.	226	320	452	640
41	PGP0064	Pump housing segment	226			2	-	4	-
	PGP0065	Pump housing segment	320			-	2	-	4

Injection S

41	PGP0101	Pump housing segment	226			2	-	4	-
	PGP0102	Pump housing segment	320			-	2	-	4

Injection A

41	PGP0104	Pump housing segment	226			2	-	4	-
	PGP0105	Pump housing segment	320			-	2	-	4

Accessories

Pos. 42-48

Pos.	Part number	Description	Dimensions	Notes	Rep.	226	320	452	640
42	NST0020	Screw plug	40,5 x 9,5				6		
43	PGP0347	Cover flange					1		
44	RFL3368	Lifting lug					2		
45	NMK0005	Hexagon nut	M 16	DIN 6331			24		
46	NGS0074	Threaded bolt	M 16 x 385 mm	DIN 976		-	4	-	-
	NGS0075	Threaded bolt	M 16 x 480 mm	DIN 976		4	-	-	-
	NGS0077	Threaded bolt	M 16 x 610 mm	DIN 976		-	-	4	-
	NGS0069	Threaded bolt	M 16 x 800 mm	DIN 976		-	-	-	4
47	NGS0073	Threaded bolt	M 16 x 375 mm	DIN 976		-	8	-	-
	NGS0061	Threaded bolt	M 16 x 470 mm	DIN 976		8	-	-	-
	NGS0076	Threaded bolt	M 16 x 600 mm	DIN 976		-	-	8	-
	NGS0068	Threaded bolt	M 16 x 790 mm	DIN 976		-	-	-	8
48	NST0013	Screw plug					3		

Rotary lobes

Position 51

Pos.	Part number	Description	Dimensions	Notes	Rep.	226	320	452	640
51	PKD0188	Rotary lobe	226 3F60L	NBR		1	-	2	-
	PKD0189	Rotary lobe	226 3F60R	NBR		1	-	2	-
	PKD0186	Rotary lobe	320 3F60L	NBR		-	1	-	2
	PKD0187	Rotary lobe	320 3F60R	NBR		-	1	-	2

Preload

Pos. 55-60

Pos.	Part number	Description	Dimensions	Notes	Rep.	226	320	452	640
55	PRS.102	Strain bolt	M 16 x 80 mm				2		
56	NSR.037	Multi-disc ring					2		
57	NPF0003	Fitting key	A; 10 x 8 x 25	DIN 6885			2		
58	PRS0766	Pressure disc					2		
59	NTF.003	Spring washer	A; 100 x 51 x 6	DIN 2093			2		
60	NTF.002	Spring washer	A; 71 x 36 x 4	DIN 2093 FST			6		
61	PRS0792	Clamping sleeve					2		

Accessories

Pos. 62-70

Pos.	Part number	Description	Dimensions	Notes	Rep.	226	320	452	640
62	PRS0789	Sleeve					2		
63	NLG.028.N1.T1	Cylindrical roller bearing	85 x 150 x 36 mm				2		
64	NSR.036	Retaining ring	Ø 85 mm x 3,0 mm				2		
65	PRS.A036	O-ring carrier					2		
66	DOR.045	O-ring	92 x 4				2		
67	DOR.044	O-ring	85 x 2,5				2		
68	DOR.050	O-ring	150 x 3				2		
69	PGP.A037	Bearing cover					2		
71	NUS.004	Washer	A; 10,5 x 20 x 2				8		

Buffer chamber enlargement

Position 74

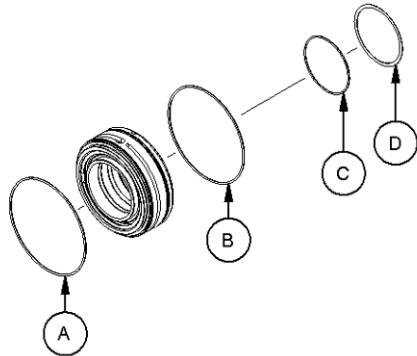
Pos.	Part number	Description	Dimensions	Notes	Rep.	226	320	452	640
74	PSG0008	Buffer fluid tank	0,68 l				2		

Cartridge mechanical seal

Pos. 79

Pos.	Part number	Description	Dimensions	Notes	Rep.	226	320	452	640
79	PBT0195	Cartridge mechanical seal		SiC; HNBR, HNBR		4			
	PBT1014	Cartridge mechanical seal		Duronit; HNBR, HNBR					

Steel; single mechanical seal



"Loose parts" for Cartridge mechanical seal

Quantity per cartridge

Pos.	Part number	Description	Dimensions	Notes	Rep.	Qty.
A	DOR.027	O-ring	144 x 3	NBR		1
	DOR.027.VI	O-ring	144.5 x 3	FPM		
B	DOR.027	O-ring	144 x 3	NBR		1
	DOR.027.EP	O-ring	144.5 x 3	EPDM		
	DOR.027.VI	O-ring	144.5 x 3	FPM		
	DOR.027.PT	O-ring	144 x 3	Silicone FEP coated		
C	DOR.044	O-ring	85 x 2.5	NBR		1
	DOR.044.VI	O-ring	85 x 2.5	FPM		
D	NUS.044	Shim	94.5 x 85.5 x 0.75			1

These positions are contained in the Cartridge mechanical seal as "loose parts".

Screw plug + copper ring

Positions 102-103

Pos.	Part number	Description	Dimensions	Notes	Rep.	226	320	452	640
102	NSK0106	Screw plug	M 30 x 1,5	DIN 910-1		2			
103	DKR0003	Copper ring	A; 30 x 36 x 2			2			

Material for connectors

Pos.	Part number	Description	Dimensions	Notes	Rep.	226	320	452	640
	NSK.030	Hexagon head screw	M 12 x 40			18	20	26	30
	NUS.005	Washer	13 x 24 x 2,5			18	20	26	30
	DFD0197	Flange gasket	226			1	-	-	-
	DFD0198	Flange gasket	320			-	1	-	-
	DFD0199	Flange gasket	452			-	-	1	-
	DFD0200	Flange gasket	640			-	-	-	1

Tools

Pos.	Part number	Description	Dimensions	Notes	Rep.	226	320	452	640
	PBA.027	Combination tool				x			
	PBA.A001.TL	Rotary lobe puller				x			
	PBA.A001.T2	Rotary lobe puller					x		
	PBA.A001.T3	Rotary lobe puller						x	x

Operating material

Pos.	Part number	Description	Dimensions	Notes	Rep.	Qty.
	BKL.013	Surface seal WEICONLOCK	AN305-74	250 ml		x
	BKL.013.N1		AN305-74	50 ml		

Required spare parts for rotary lobe change

Pos.	Part number	Description	Dimensions	Notes	Rep.	226	320	452	640
21	NPF.042	Fitting key	B 22 x 14 x 90	DIN 6885		2	-	2	-
	NPF.043	Fitting key	B 22 x 14 x 100	DIN 6885		2	-	2	-
	NPF.044	Fitting key	B 22 x 14 x 140	DIN 6885		-	4	-	8
	NPF.045	Fitting key	B 22 x 14 x 220	DIN 6885		-	-	2	-
36	DOR0163	O-ring	445 mm x 5 mm					1	
51	PKD0188	Rotary lobe	226 3F60L	NBR		1	-	2	-
	PKD0189	Rotary lobe	226 3F60R	NBR		1	-	2	-
	PKD0186	Rotary lobe	320 3F60L	NBR		-	1	-	2
	PKD0187	Rotary lobe	320 3F60R	NBR		-	1	-	2
55	PRS.102	Strain bolt	M 16 x 80 mm					2	
66	DOR.045	O-ring	92 x 4					2	
67	DOR.044	O-ring	85 x 2,5					2	
68	DOR.050	O-ring	150 x 3					2	

Required spare parts for mechanical seal change

Pos.	Part number	Description	Dimensions	Notes	Rep.	226	320	452	640
36	DOR0163	O-ring	445 mm x 5 mm					1	
55	PRS.102	Strain bolt	M 16 x 80 mm					2	
66	DOR.045	O-ring	92 x 4					2	
67	DOR.044	O-ring	85 x 2,5					2	
68	DOR.050	O-ring	150 x 3					2	

Steel; single mechanical seal

79	PBT0195	Cartridge mechanical seal		SiC; HNBR, HNBR				4	
	PBT1014	Cartridge mechanical seal		Duronit; HNBR, HNBR					

Required spare parts for wear part replacement

Pos.	Part number	Description	Dimensions	Notes	Rep.	226	320	452	640
21	NPF.042	Fitting key	B 22 x 14 x 90	DIN 6885		2	-	2	-
	NPF.043	Fitting key	B 22 x 14 x 100	DIN 6885		2	-	2	-
	NPF.044	Fitting key	B 22 x 14 x 140	DIN 6885		-	4	-	8
	NPF.045	Fitting key	B 22 x 14 x 220	DIN 6885		-	-	2	-
31	PFL0151	Wear plate						2	
32	NSK0027	Hexagon head bolt	M 10 x 25	DIN 933				8	
36	DOR0163	O-ring	445 mm x 5 mm					1	
51	PKD0188	Rotary lobe	226 3F60L	NBR		1	-	2	-
	PKD0189	Rotary lobe	226 3F60R	NBR		1	-	2	-
	PKD0186	Rotary lobe	320 3F60L	NBR		-	1	-	2
	PKD0187	Rotary lobe	320 3F60R	NBR		-	1	-	2
55	PRS.102	Strain bolt	M 16 x 80 mm					2	
66	DOR.045	O-ring	92 x 4					2	
67	DOR.044	O-ring	85 x 2,5					2	
68	DOR.050	O-ring	150 x 3					2	

Steel; single mechanical seal

79	PBT0195	Cartridge mechanical seal		SiC; HNBR, HNBR				4	
	PBT1014	Cartridge mechanical seal		Duronit; HNBR, HNBR					



Hugo Vogelsang Maschinenbau GmbH
Holthöge 10-14
49632 Essen/Oldb.

Phone: +49 (0) 54 34 83 0
Fax: +49 (0) 54 34 83 10

vogelsang-gmbh.com
info@vogelsang-gmbh.com

ENGINEERED TO WORK

USA
Vogelsang USA Ltd.
vogelsangusa.com

Spanien
Vogelsang S.L.
vogelsang.es

Schweden
Vogelsang Sverige AB
vogelsang.se

Großbritannien
Vogelsang Ltd.
vogelsang.co.uk

Australien
Vogelsang Pty. Ltd.
vogelsang.com.au

Malaysia
Vogelsang Malaysia
vogelsang.info

Frankreich
Vogelsang France S.A.R.L.
vogelsang.fr

Indien
Vogelsang India Private Limited
vogelsangindia.com

Finnland
Vogelsang Oy
vogelsang.fi

Italien
Vogelsang Italy Srl
vogelsang-srl.it

Tschechische Republik
Vogelsang CZ s.r.o.
vogelsang-czech.cz

Irland
Vogelsang Irland
vogelsang.ie

Polen
Vogelsang Poland Sp. z o.o.
vogelsang.pl

Dänemark
Vogelsang A/S
vogelsang-as.dk

Südkorea
Vogelsang Korea Co., Ltd.
vogelsang.co.kr

Rumänien
Vogelsang Romania SRL
vogelsang.ro

Brasilien
Vogelsang Brasil Ltda.
vogelsang.com.br

Russland
Vogelsang Russland
vogelsang.ru

China
Vogelsang Mechanical Engineering (Shanghai) Co., Ltd.
vogelsang.com.cn

Mexico
Vogelsang De México S.de R.L. de CV
vogelsang.mx

Deutschland - Niederlassung Ost
Vogelsang Lutherstadt Eisleben
vogelsang-gmbh.com